

▲ Transducer

◀ Screenshot of the operating software (left side 100 kHz, right side 6 kHz)

◀ Parametric sub-bottom profiler SES-2000 compact during operation

▶ **Transducer:**  
nonlinear transmitter, linear receiver  
beamwidth  $\pm 1.8^\circ$  (0.22 x 0.22)m<sup>2</sup>

▶ **Transmitter:**  
primary frequency: 100 kHz  
secondary frequencies:  
5, 6, 8, 10, 12, 15 kHz  
electrical pulse power: > 12 kW  
source level: > 236 dB/ $\mu$ Pa @ 1 m

▶ **Receiver:**  
1 channel primary frequency  
1 channel secondary frequency

▶ **Pulse Width:**  
66  $\mu$ s ... 800  $\mu$ s

▶ **Pulse Rate:**  
up to 50/s depending on range,  
also in deeper water  
with multi-ping transmission mode

▶ **System Control:**  
external PC or Notebook with USB interface

▶ **Water Depth Range:**  
1 m ... 400 m

▶ **Penetration:**  
up to 40 m depending on sediments,  
frequency and noise level

▶ **Resolution:**  
multiple target resolution: > 5 cm  
depending on frequency and recording range

▶ **Accuracy:**  
100 kHz: 0.02 m + 0.02% of water depth  
10 kHz: 0.04 m + 0.02% of water depth

▶ **System Components:**  
fully integrated 1/2 19" system  
(W 0.30 m x H 0.35 m x D 0.40 m); 23 kg  
transducer  
(W 0.30 m x H 0.07 m x D 0.26 m); 25 kg  
including 20m cable and stainless steel frame

▶ **Operating Conditions:**  
power supply: 115-230 V AC +5%/-10%, 50-60 Hz  
power consumption < 300 W  
operating temperature: 0°C ... 40°C

# SES-2000 compact

## Parametric Sub-bottom Profiler



**Innomar**

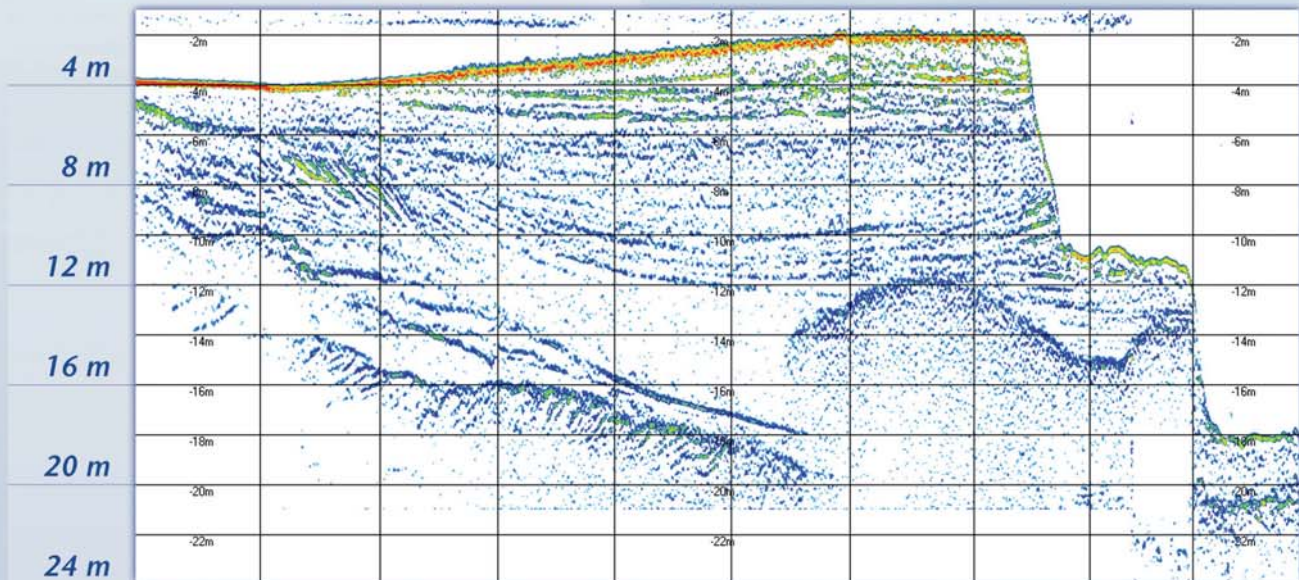


[www.innomar.com](http://www.innomar.com)

Innomar Technologie GmbH, Germany

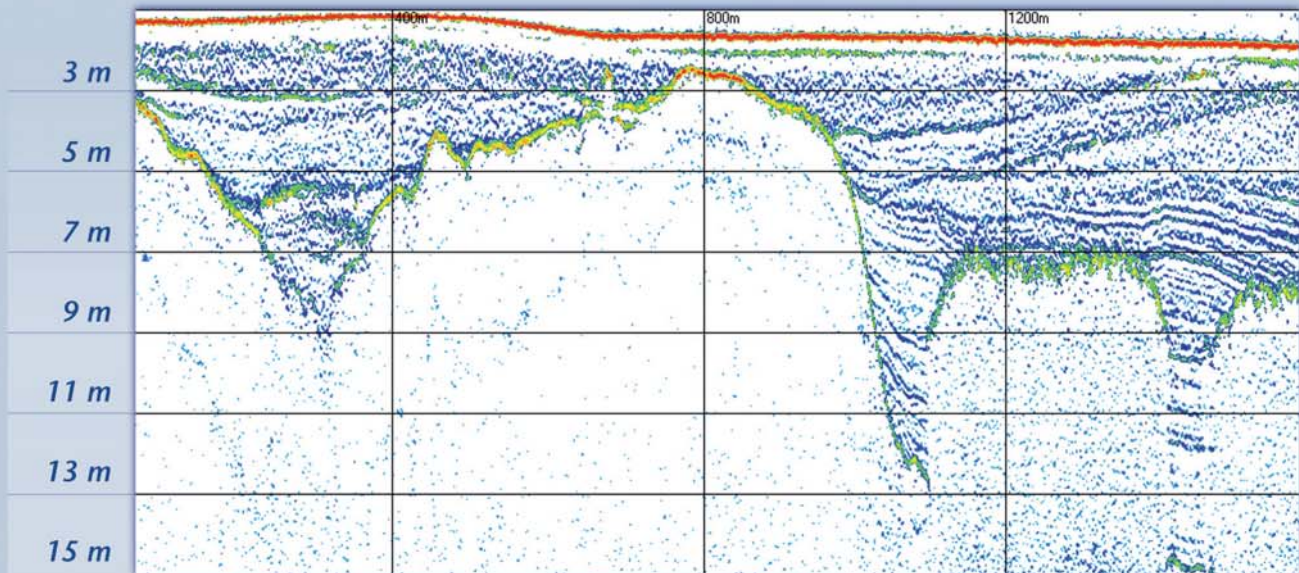


# Survey examples of SES-2000 compact



*Gulf of Trieste echo plot example*

Frequency 8 kHz, pulse length 375  $\mu$ s,  
profile length 1000 m



*Gambia River echo plot example*

Frequency 10 kHz, pulse length 200  $\mu$ s,  
profile length 1600 m

**Innomar** Technologie GmbH

Schutower Ringstraße 4  
D-18069 Rostock  
Phone (Fax) +49 381 440 79-0 (-299)  
E-Mail [info@innomar.com](mailto:info@innomar.com)

**Innomar**



[www.innomar.com](http://www.innomar.com)

